



## UOB PRVI American Express® Card

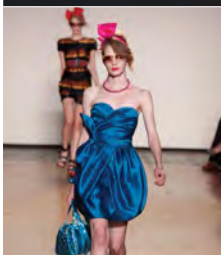
### Superior Rewards. Exceptional Privileges.

Carefully designed to deliver an exceptional level of rewards and benefits, you know you are amply rewarded every time you use your UOB PRVI American Express Card. Put all your spend on your Card and see your UNI\$ accumulate. In no time, you will be redeeming for your favorite rewards.

### Get more rewards and faster.

Here's a quick summary of how quickly your UNI\$ stack up with your UOB PRVI Card.

- ✦ **10X** rewards on your purchases when you make 5 transactions or more<sup>1</sup>.
- ✦ **10X** rewards on UOB Chef's Creation Series every weekend<sup>2</sup>.
- ✦ **6X** rewards<sup>3</sup> at Club 21 boutiques, Les Amis Group of restaurants, Mandarin Gallery, Sincere Fine Watches and UOB Travel.
- ✦ **5X** rewards and up to 25% savings at GNC outlets, OG and Shaw Theatres with Xtraordinary Weekends<sup>4</sup>.
- ✦ **2X** rewards all year round and up to 50% bonus UNI\$ with our Annual Spend and Loyalty Bonus<sup>5</sup>.



1. From 15 Jul - 14 Oct 2010, UOB PRVI Cardmembers will enjoy an additional 8 bonus UNI\$ for every S\$5 spent for their first 5 transactions, up to a maximum spend cap of S\$1,250 or 2,500 UNI\$ per campaign month of the promotional period. The campaign months are 15 Jul - 14 Aug 2010, 15 Aug - 14 Sep 2010 and 15 Sep - 14 Oct 2010 over the three-month promotional period. Transactions made by both Main and Supplementary Cards will be considered in the awarding of the bonus UNI\$ for the first five transactions of each campaign month. Beyond the S\$1,250 spend mark or the fifth transaction, whichever comes earlier, Cardmembers will earn the basic 2X UNI\$ for every S\$5 spent. Retail transactions which earn SMART\$ or rebates are considered for the 5 transactions threshold but will not be eligible for the awarding of bonus UNI\$. The bonus UNI\$ will be credited into your account in the following campaign month and will be reflected in your following month's statement depending on your statement cycle. To qualify, your Card Account must be in good standing and not be cancelled for any reason. UOB assumes no liability or responsibility for any late transaction postings which may result in differences in the awarding of bonus UNI\$. Should any dispute arise, the decision of UOB shall be final..

2. From 15 Jul - 14 Oct 2010, every Friday to Sunday, UOB PRVI Cardmembers will earn an additional 8 bonus UNI\$ for every S\$5 spent at all UOB Chef's Creation Series restaurants, up to a maximum spend of S\$2,500 or 5,000 per statement cycle. Beyond the S\$2,500 spend mark, UOB PRVI Cardmembers will earn the basic 2X UNI\$ for every S\$5 spent. The maximum spend cap of S\$2,500 is subject to change without prior notice to Cardmembers.

3. Cardmembers will earn 6 UNI\$ for every S\$5 spent at participating establishments, up to a maximum spend of S\$5,000 or 6,000 UNI\$ per statement cycle. Beyond the S\$5,000 spend mark, Cardmembers will earn the basic 2 UNI\$ for every S\$5 spent. Participation of selected merchants and the maximum spend cap of S\$5,000 is subject to change without prior notice to Cardmembers.

4. Xtraordinary Weekends offers are valid on every weekend beginning from Friday to Sunday, from now till 2 Jan 2011 (2359 hours), unless otherwise specified. Please visit [uob.com.sg](http://uob.com.sg) for details.

5. To qualify for the Annual Spend and Loyalty Bonus, Cardmembers will need to spend a minimum of S\$12,000 on their UOB PRVI Card within each year of their Cardmembership. Other terms and conditions apply. Please visit [uob.com.sg](http://uob.com.sg) for details.