

UOB LADY'S CARDMEMBERS EXCLUSIVE

First Supplementary Card Free for Life!



Share the perks and privileges the men still don't get - with the UOB Lady's Supplementary Card. To apply, call 1800 22 22 121

Shopping Privileges @ Wisma Atria



1. Enjoy **Triple chances** of winning a Subaru R2[#] and other attractive prizes in the Grand and Weekly Draws with every \$50* charged to your UOB Lady's Card during the Great Singapore Sale! Check out pg 3 for more details

* Purchase must be made in a single receipt * COE of car not included

2. Receive a **\$10 Wisma Atria Voucher** with a min spend of \$100[^] charged to your UOB Lady's Card on every Thursday for the month of May

[^] across a max of 3 combined charge slips • Max of 2 redemptions per Cardmember per day

3. Enjoy **Free parking*** on weekends with a min spend of \$50[^] charged to your UOB Lady's Card

* First Hour or Per Entry on Sat (whichever is lower) and first two hours on Sun

[^] Max of 2 combined charge slips for the 1st 50 Cardmembers

Terms & Conditions for Privileges at Wisma Atria

- All purchases must be made at Wisma Atria and charged to UOB Lady's Card
- Present your UOB Lady's Card and charge slips for redemption at the Concierge, Level 1

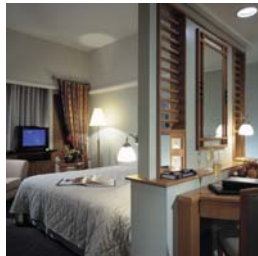


Earn 0.5% BONUS SMART\$ for every dollar charged to your card, based on a min retail spend of \$800*. Accumulate cash rebates faster, use it at participating SMART merchants or even to offset against your credit card bills

* Promotion valid till 31 May 2006. Thereafter, min retail spend of \$1500 applies
Terms and conditions apply. Visit www.uobgroup.com for more details



Banyan Tree Bintan



Travel | by UOB Travel Planners

LADY'S CARD DEDICATED TRAVEL CONCIERGE. CALL 6302 5519

3D2N BANYAN TREE BINTAN RESORT STAY FROM S\$609 PER PERSON (UP. S\$769)

- Return ferry ticket from Singapore to Bintan
- Return land transfer from Bintan Ferry terminal to hotel
- 2 nights accommodation at Valley Villa (Twin sharing)
- 1 time breakfast at Treetops restaurant for up to 2 persons per villa basis
- 1 90 mins massage session for 2 person per stay
- 1 Banyan Tree Gallery gift per villa per stay
- Seaport Tax, Ferry Security Tax & ferry Fuel Tax

- Booking period: 02 May - 28 Jun 2006
- Travel validity: 05 May - 30 Jun 2006
- Black out dates: 09 May 2006
- Additional surcharge of S\$140 per villa per night from 11-13 May 2006
- Other terms and conditions apply

2N SOFTEL PLAZA SAIGON ROOMSTAY FOR 2 AT S\$459 (UP. S\$529)

- Daily breakfast
- Chocolate Buffet for 2 persons per stay
- Welcome fruit platter
- Late check out till 3pm (subject to availability)

- Booking period: 10 Apr - 30 Jun 2006
- Hotel blackout dates: 20 May - 05 Jun 2006
- Other terms and conditions apply